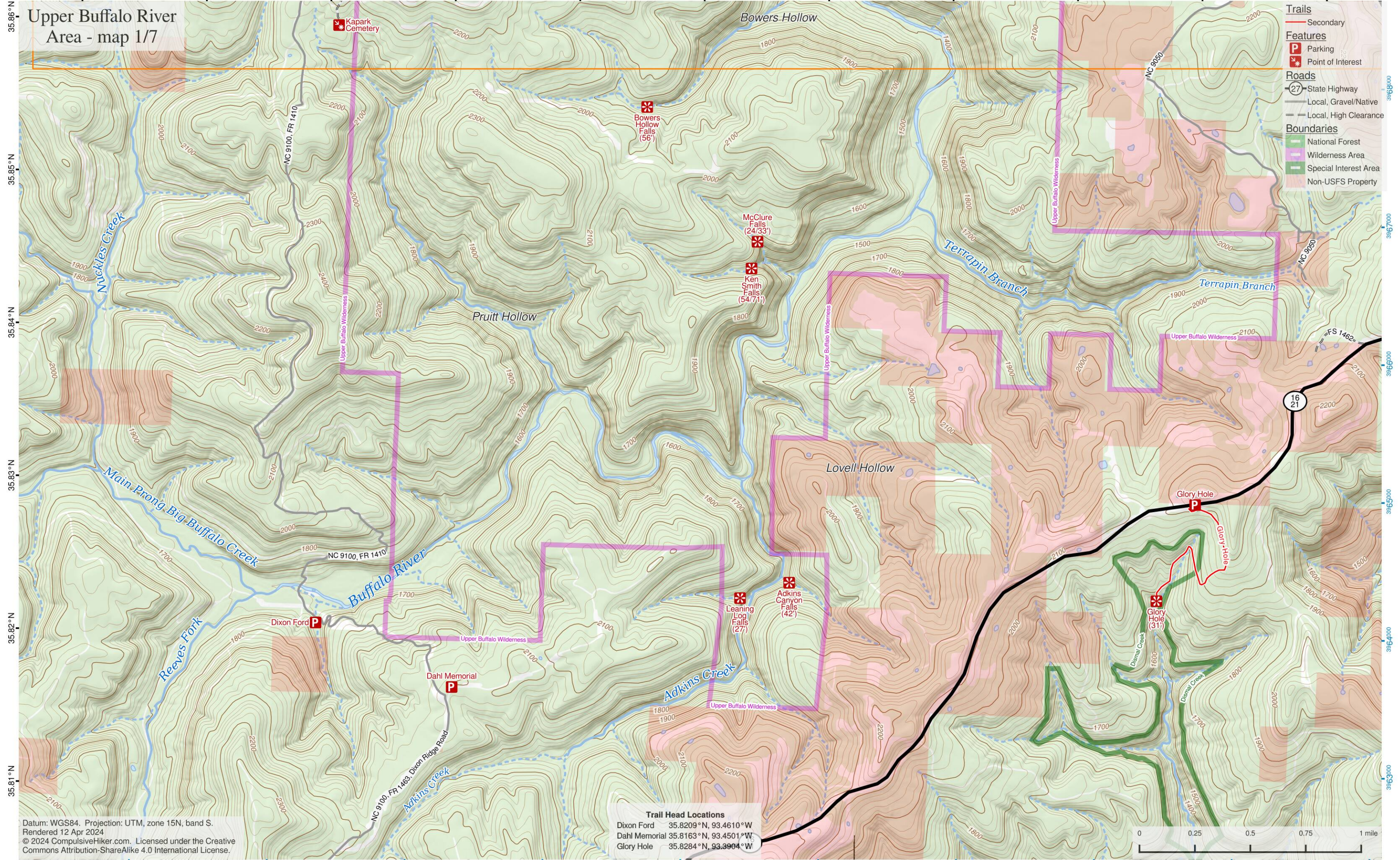


93.48°W 93.47°W 93.46°W 93.45°W 93.44°W 93.43°W 93.42°W 93.41°W 93.40°W 93.39°W 93.38°W

# Upper Buffalo River Area - map 1/7



- Trails**
  - Secondary
- Features**
  - Parking
  - Point of Interest
- Roads**
  - State Highway
  - Local, Gravel/Native
  - Local, High Clearance
- Boundaries**
  - National Forest
  - Wilderness Area
  - Special Interest Area
  - Non-USFS Property

35.86°N  
35.85°N  
35.84°N  
35.83°N  
35.82°N  
35.81°N

3963900  
3967000  
3965000  
3964000  
3963900

Datum: WGS84. Projection: UTM, zone 15N, band S.  
 Rendered 12 Apr 2024  
 © 2024 CompulsiveHiker.com. Licensed under the Creative Commons Attribution-ShareAlike 4.0 International License.

**Trail Head Locations**

Dixon Ford	35.8209°N, 93.4610°W
Dahl Memorial	35.8163°N, 93.4501°W
Glory Hole	35.8284°N, 93.3904°W

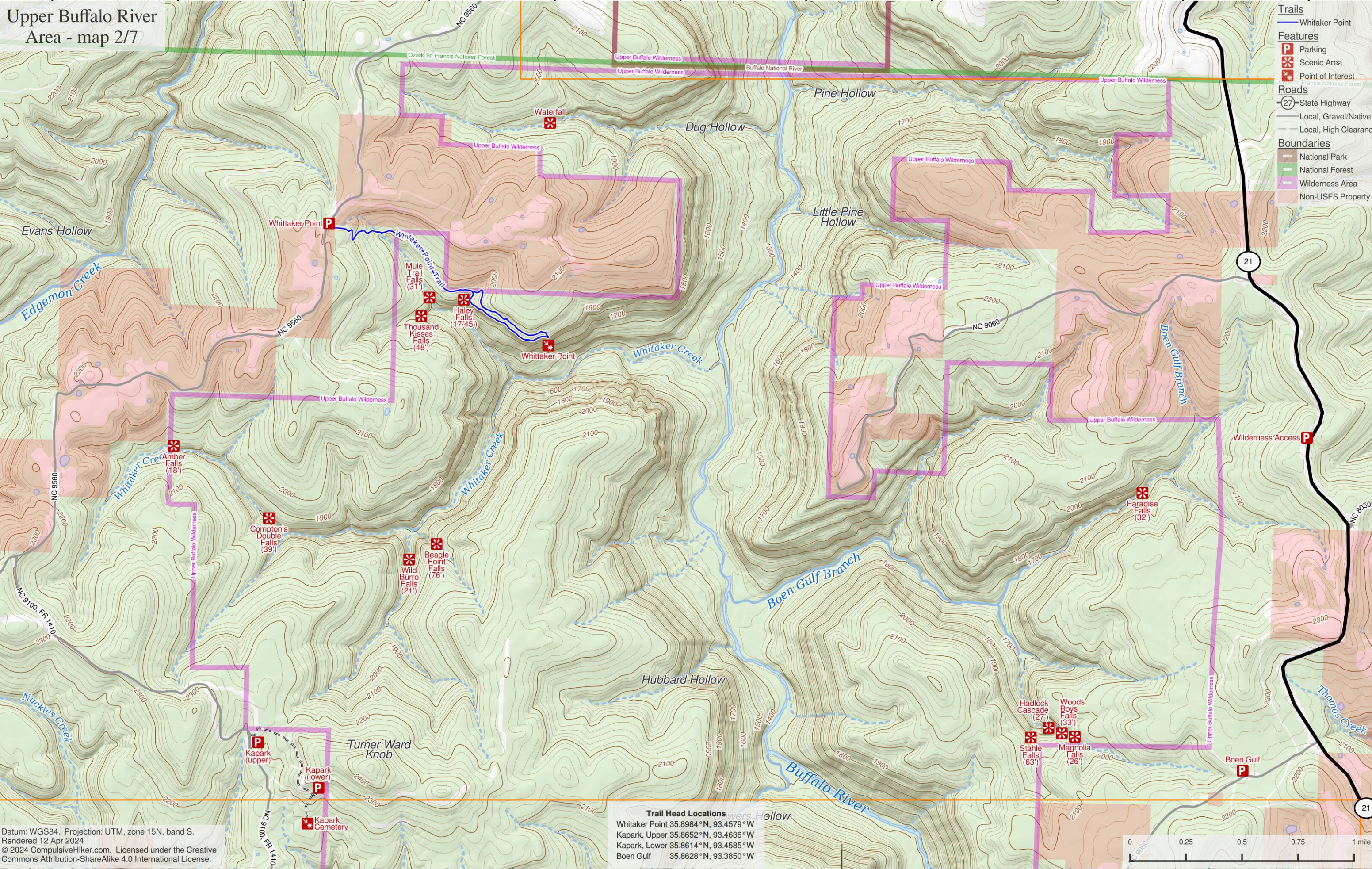


457000 458000 459000 460000 461000 462000 463000 464000 465000 466000

93.48°W 93.47°W 93.46°W 93.45°W 93.44°W 93.43°W 93.42°W 93.41°W 93.40°W 93.39°W 93.38°W

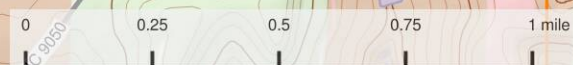
# Upper Buffalo River Area - map 2/7

- Trails**
  - Whittaker Point
- Features**
  - Parking
  - Scenic Area
  - Point of Interest
- Roads**
  - State Highway
  - Local, Gravel/Native
  - Local, High Clearance
- Boundaries**
  - National Park
  - National Forest
  - Wilderness Area
  - Non-USFS Property



Datum: WGS84. Projection: UTM, zone 15N, band S.  
 Rendered 12 Apr 2024  
 © 2024 CompulsiveHiker.com. Licensed under the Creative Commons Attribution-ShareAlike 4.0 International License.

**Trail Head Locations**  
 Whittaker Point 35.8984°N, 93.4579°W  
 Kapark, Upper 35.8652°N, 93.4636°W  
 Kapark, Lower 35.8614°N, 93.4585°W  
 Boen Gulf 35.8628°N, 93.3850°W



457000 458000 459000 460000 461000 462000 463000 464000 465000 466000

# Upper Buffalo River Area - map 3/7

**Trails**

- Buffalo River
- Smith Creek Road
- Big Spring
- Lower
- Upper
- Elise Falls
- Point of Interest

**Features**

- Parking
- Bridge
- Scenic Area
- Point of Interest

**Roads**

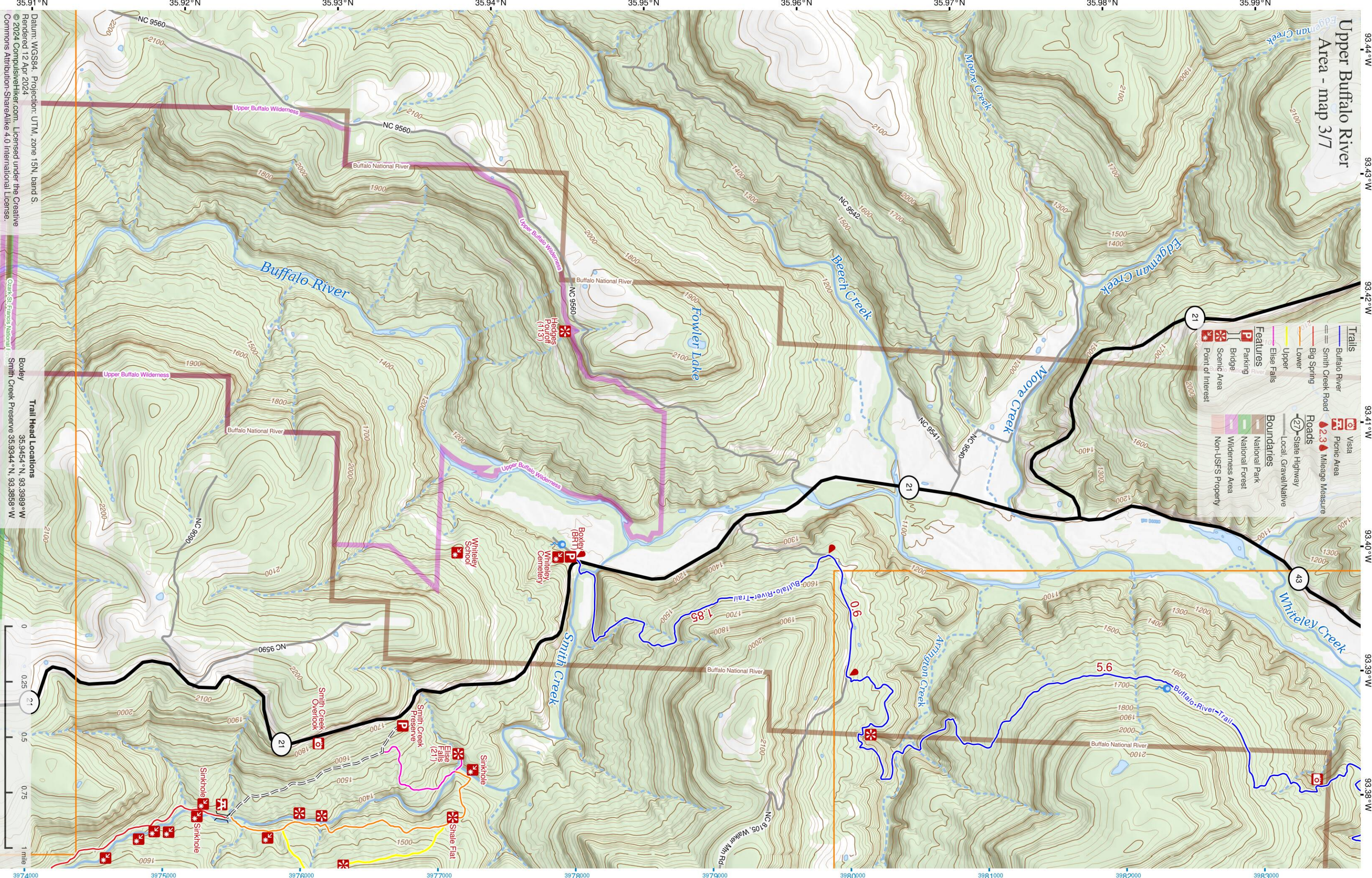
- 27 State Highway
- Local, Gravel/Native

**Boundaries**

- National Park
- National Forest
- Wilderness Area
- Non-USFS Property

**Other Features**

- Visa
- Picnic Area
- Mileage Measure



35.91°N 35.92°N 35.93°N 35.94°N 35.95°N 35.96°N 35.97°N 35.98°N 35.99°N

Datum: WGS84, Projection: UTM, zone 15N, band S.  
Rendered 12 Apr 2024  
© 2024 CompuLoverHiker.com. Licensed under the Creative Commons Attribution-ShareAlike 4.0 International License.

**Trail Head Locations**

Boxley 35.9454°N, 93.3989°W  
Smith Creek Preserve 35.9344°N, 93.3859°W

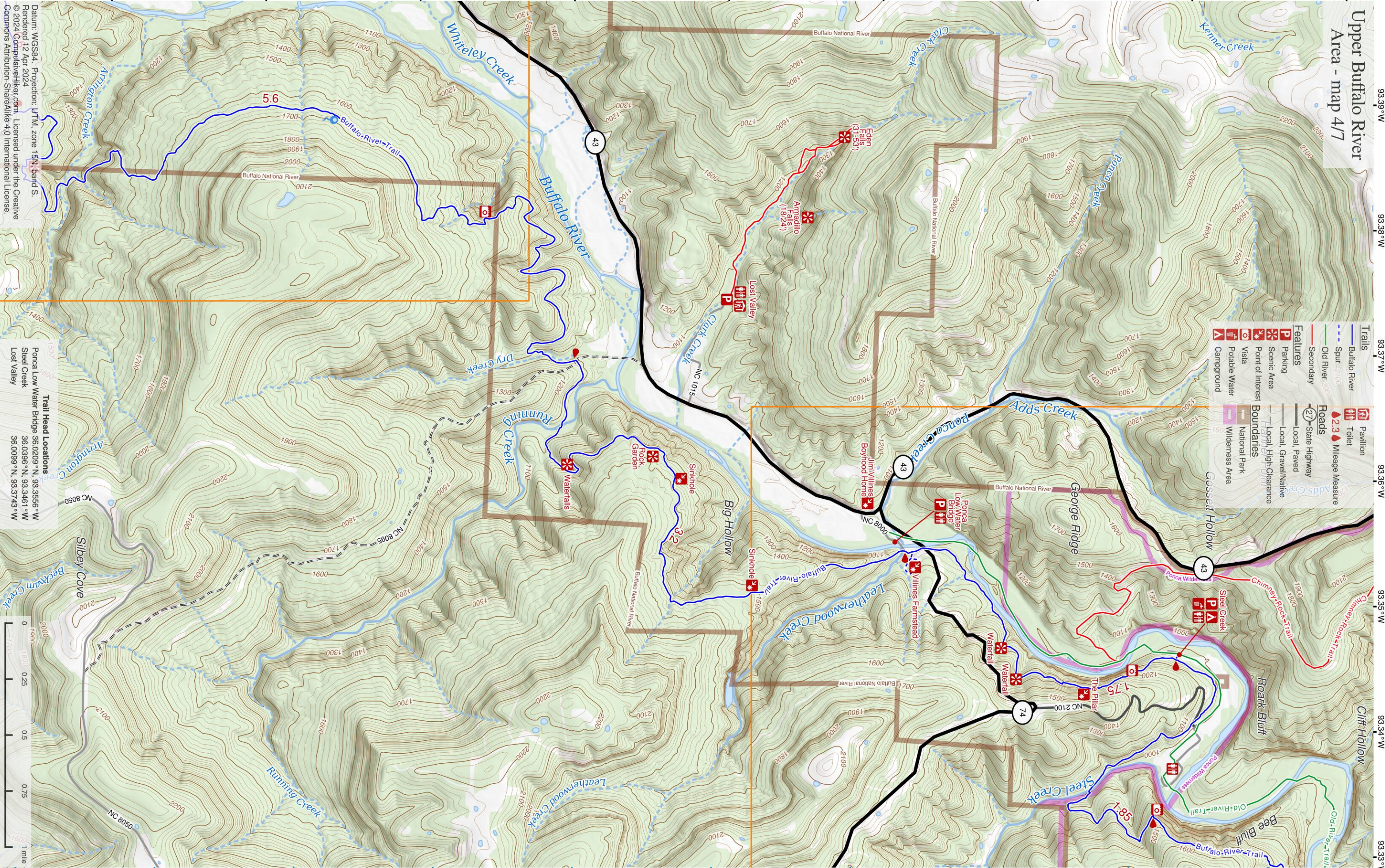
461000 462000 463000 464000 465000 466000

0 0.25 0.5 0.75 1 mile

374000 375000 376000 377000 378000 379000 380000 381000 382000 383000

# Upper Buffalo River Area - map 4/7

Trails	Pavilion
Buffalo River	Toilet
Spur	Mileage Measure
Old River	Roads
Secondary	State Highway
Parking	Local, Paved
Scenic Area	Local, Gravel/Naive
Point of Interest	Local, High Clearance
Vista	National Park
Potable Water	Wilderness Area
Campground	Boundaries
	Harmful High Clearance

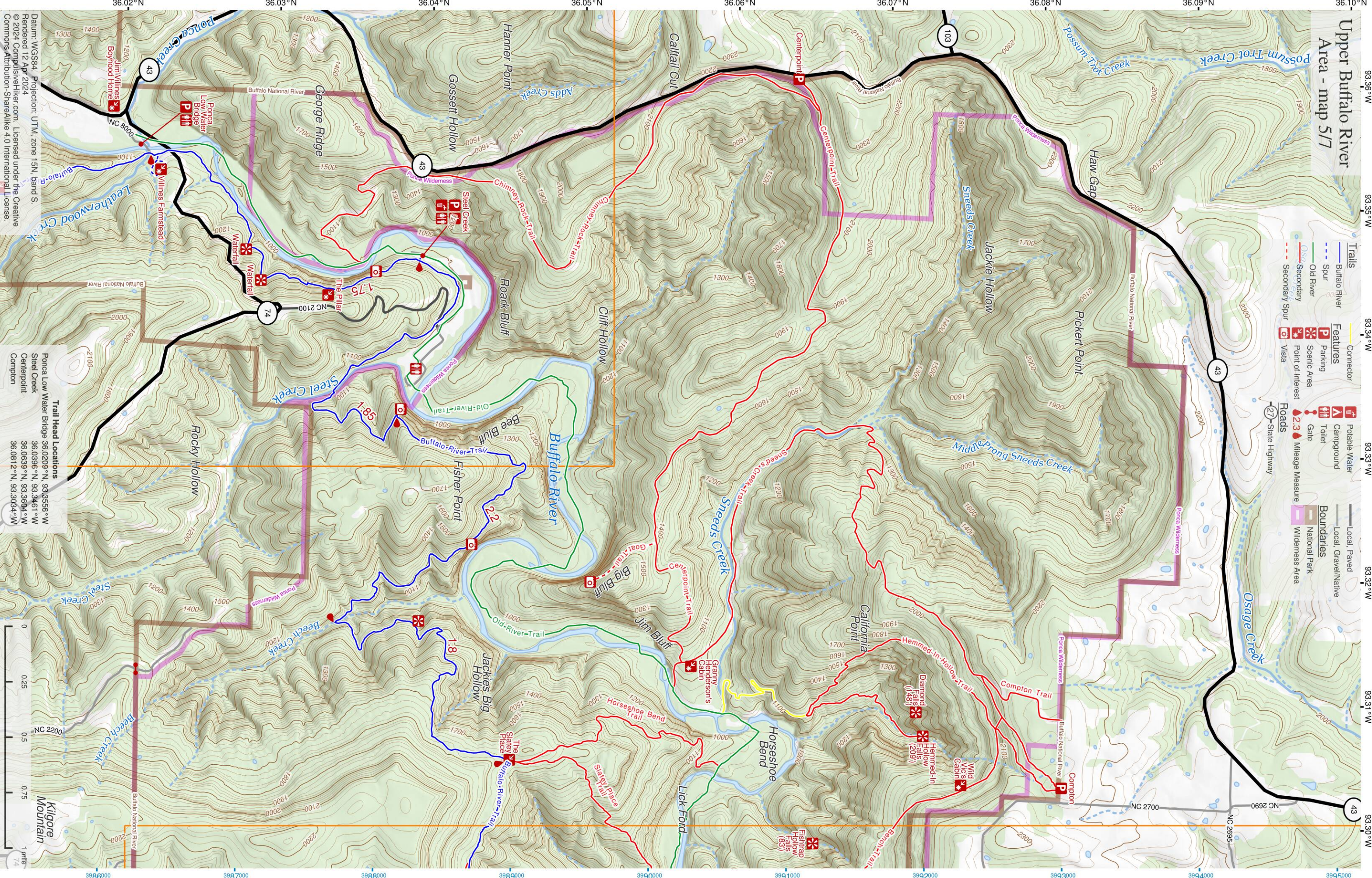


Datum: WGS84, Projection: UTM, zone 15N, band S.  
Rendered 12 Apr 2024  
© 2024 CompuLinker.com. Licensed under the Creative Commons Attribution-ShareAlike 4.0 International License.

**Trail Head Locations**  
Ponca Low Water Bridge 36.0209°N, 93.3556°W  
Steel Creek 36.0396°N, 93.3461°W  
Lost Valley 36.0099°N, 93.3743°W

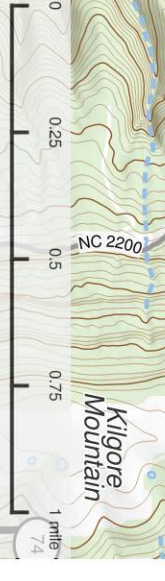
# Upper Buffalo River Area - map 5/7

- Trails**
  - Buffalo River
  - Spur
  - Old River
  - Secondary
  - Secondary Spur
- Features**
  - Connector
  - Portable Water
  - Campground
  - Parking
  - Scenic Area
  - Point of Interest
  - Gate
  - Visa
- Roads**
  - State Highway
  - Mileage Measure
- Boundaries**
  - Local, Paved
  - Local, Gravel/Native
  - National Park
  - Wilderness Area

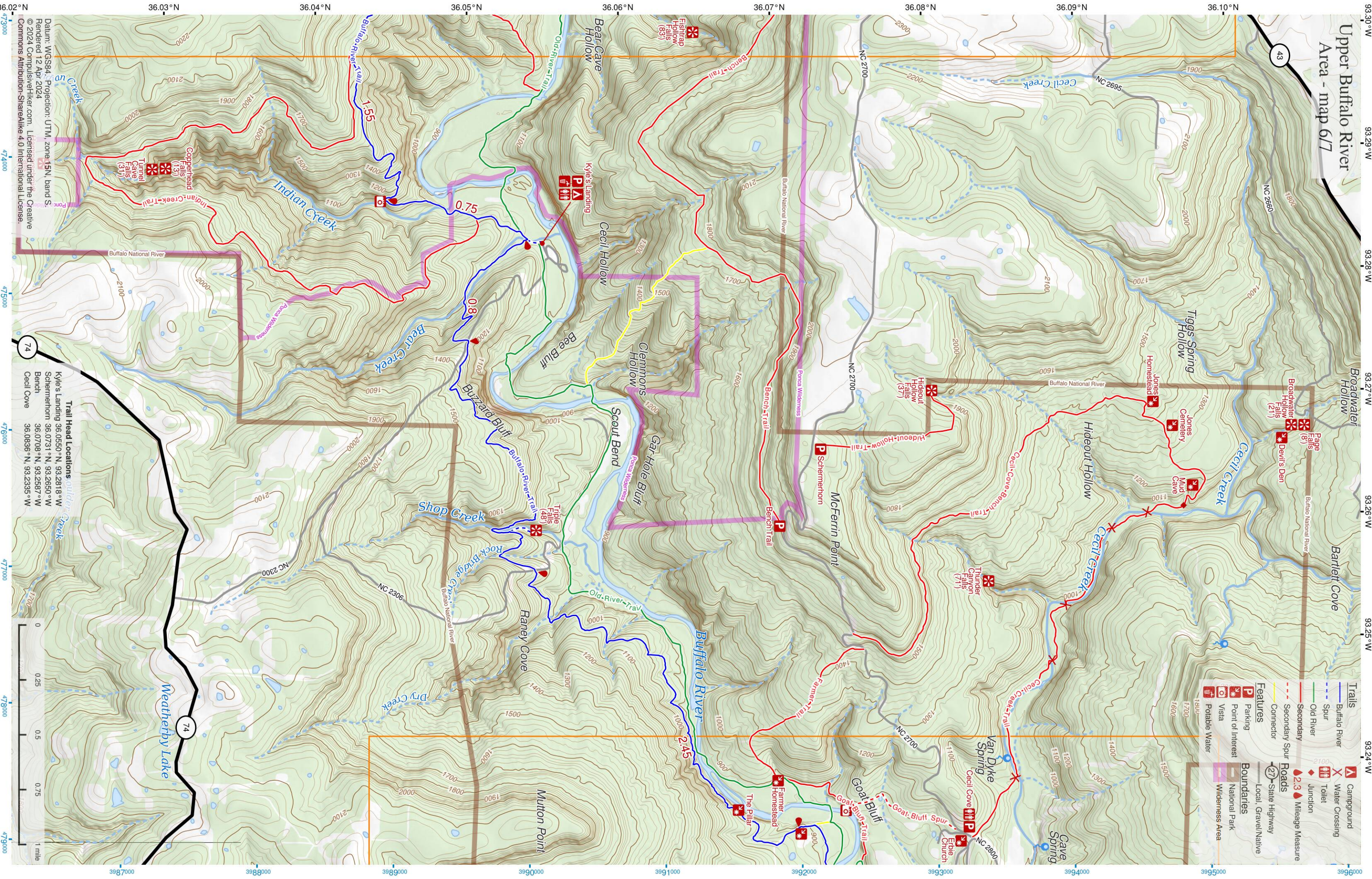


**Trail Head Locations**  
Ponca Low Water Bridge 36,0209° N, 93,3556° W  
Steel Creek 36,0396° N, 93,3461° W  
Centerpoint 36,0699° N, 93,3604° W  
Compton 36,0812° N, 93,3054° W

Datum: WGS84, Projection: UTM, zone 15N, band S.  
Rendered 12 Apr 2024  
© 2024 Comptonsilverhiker.com. Licensed under the Creative Commons Attribution-ShareAlike 4.0 International License.



# Upper Buffalo River Area - map 6/7



- Trails**
  - Buffalo River
  - Spur
  - Old River
  - Secondary
  - Secondary Spur
  - Connector
- Features**
  - Parking
  - Point of Interest
  - Visita
  - Potable Water
- Roads**
  - State Highway
  - Local, Gravel/Native
- Boundaries**
  - National Park
  - Wilderness Area
- Other Symbols**
  - Campground
  - Water Crossing
  - Toilet
  - Junction
  - Mileage Measure

**Trail Head Locations:**

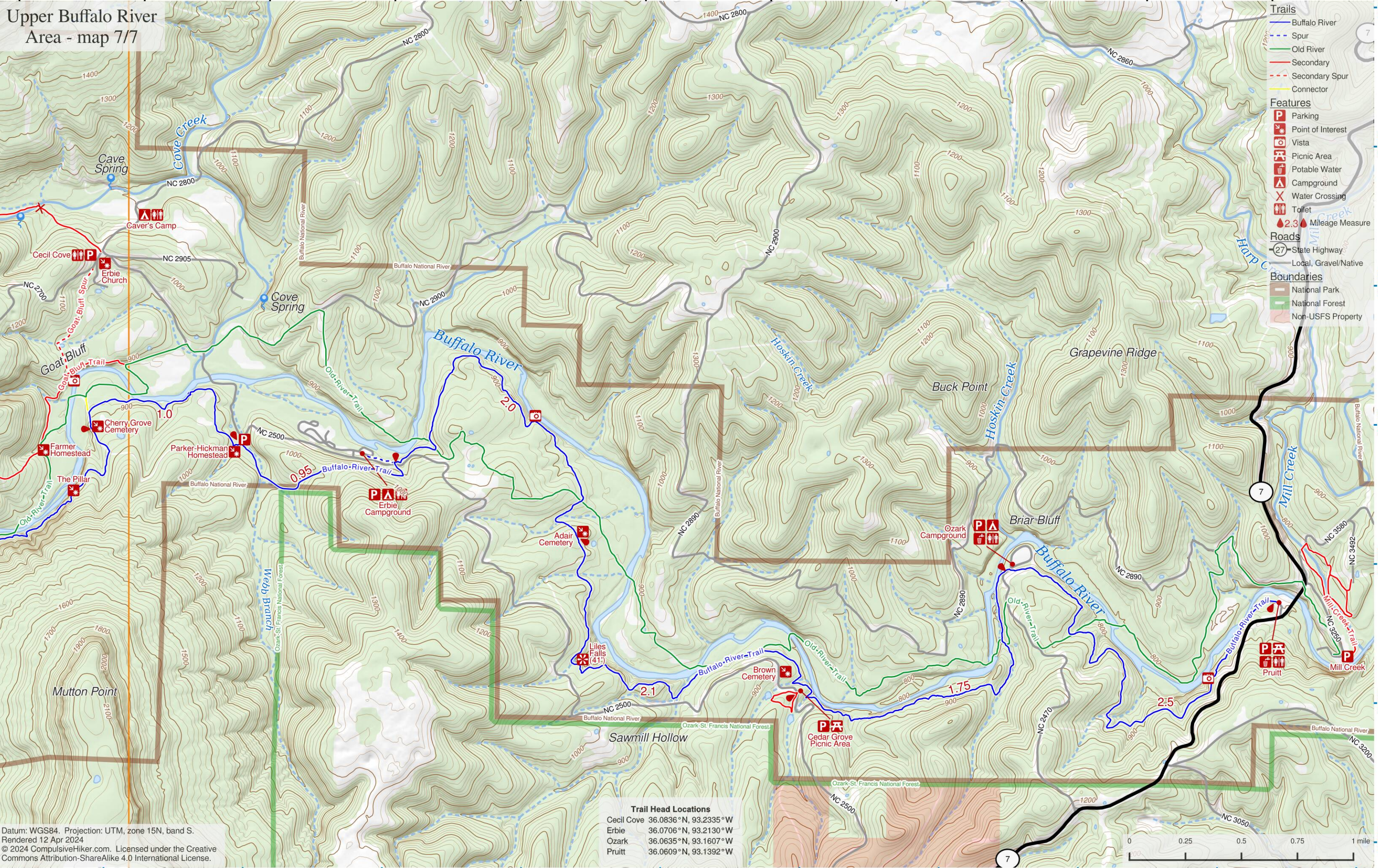
- Older Creek: 36.0550°N, 93.2818°W
- Kyle's Landing: 36.0731°N, 93.2650°W
- Schemerhorn: 36.0708°N, 93.2587°W
- Bench: 36.0836°N, 93.2335°W
- Cecil Cove

Datum: WGS84, Projection: UTM, zone 15N, band S.  
 Rendered 12 Apr 2024  
 © 2024 CompuLoverHer.com. Licensed under the Creative Commons Attribution-ShareAlike 4.0 International License.

93.24°W 93.23°W 93.22°W 93.21°W 93.20°W 93.19°W 93.18°W 93.17°W 93.16°W 93.15°W 93.14°W

# Upper Buffalo River Area - map 7/7

36.09°N  
36.08°N  
36.07°N  
36.06°N  
36.05°N



- Trails**
- Buffalo River
  - Spur
  - Old River
  - Secondary
  - Secondary Spur
  - Connector
- Features**
- Parking
  - Point of Interest
  - Vista
  - Picnic Area
  - Potable Water
  - Campground
  - Water Crossing
  - Toilet
  - 2.3 Mileage Measure
- Roads**
- State Highway
  - Local, Gravel/Native
- Boundaries**
- National Park
  - National Forest
  - Non-USFS Property

**Trail Head Locations**

Cecil Cove	36.0836°N, 93.2335°W
Erbie	36.0706°N, 93.2130°W
Ozark	36.0635°N, 93.1607°W
Pruitt	36.0609°N, 93.1392°W

Datum: WGS84. Projection: UTM, zone 15N, band S.  
 Rendered 12 Apr 2024  
 © 2024 CompulsiveHiker.com. Licensed under the Creative Commons Attribution-ShareAlike 4.0 International License.



479000 480000 481000 482000 483000 484000 485000 486000 487000 488000